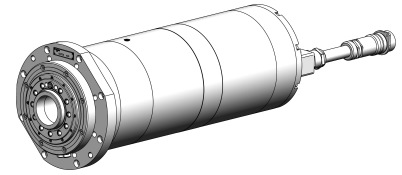


**turning spindle:
A6 (DIN 55026)**

6.000 min⁻¹

specification

13.1.2017



interface:	A6 (DIN 55026)
tool release unit:	none
rotation unit:	no
encoder:	yes
max. speed:	6000 min ⁻¹
nominal speed:	2500 min ⁻¹
nominal power:	26 kW
nominal torque:	99,3 Nm
kind of motor:	synchronous
spindle housing design:	quill
installation diameter:	282 mm
total length:	840 mm
working position:	vertical/nose up
bearing Lubrication:	grease

WEISS
G M B H