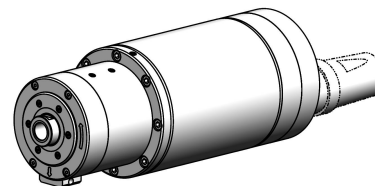


**grinding spindle:
special**

45.000 min⁻¹

specification

1.2.2021



interface:	special
tool release unit:	none
rotation unit:	no
encoder:	no
max. speed:	45000 min ⁻¹
nominal speed:	36000 min ⁻¹
nominal power:	9 kW
nominal torque:	2,4 Nm
kind of motor:	asynchronous
spindle housing design:	quill
installation diameter:	120 mm
total length:	300 mm
working position:	horizontal
bearing Lubrication:	oil air

WEISS
G M B H