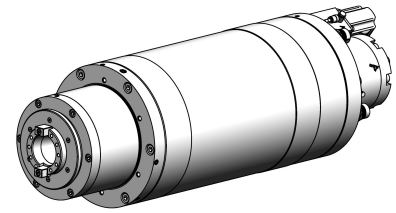


**grinding spindle:
SK 40**

12.000 min⁻¹

specification

13.1.2017



| | |
|-------------------------|-------------------------|
| interface: | SK 40 |
| tool release unit: | hydraulic |
| rotation unit: | no |
| encoder: | yes |
| max. speed: | 12000 min ⁻¹ |
| nominal speed: | 7400 min ⁻¹ |
| nominal power: | 35 kW |
| nominal torque: | 45,2 Nm |
| kind of motor: | synchronous |
| spindle housing design: | quill |
| installation diameter: | 195 mm |
| total length: | 680 mm |
| working position: | tilting |
| bearing Lubrication: | re-greasing |